

# Behavioural Safety Leadership Training

Even organisations with a strong health and safety culture can experience accidents at work.

The reasons for this may be behavioural, rather than procedural. We explore with you the reasons behind human behaviour and the decisions people make, helping to overcome behavioural barriers and increasing workplace safety.

Our aim is to shift your employees' mindsets from **having to be safe**, to **wanting to be safe**.

## Training Outline

Aimed mainly at frontline supervisors and managers, this is delivered through tailored interactive training and workshop sessions, the course consists of:

- Managers' briefing session
- Four two-hour interactive training sessions
- Activities and reading for delegates to complete between sessions



## Learning Objectives

Delegates will learn how to:

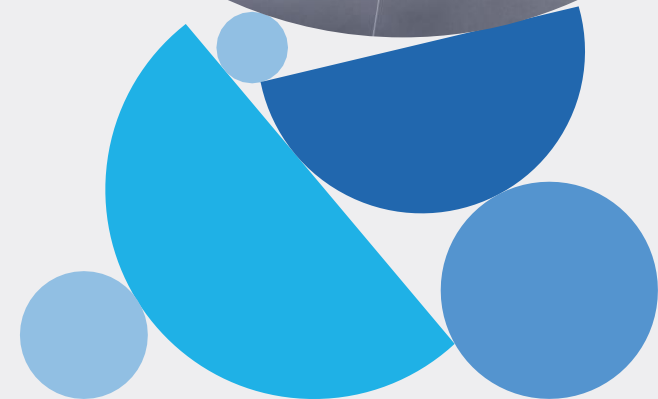
- Understand concepts about human behaviour
- Understand why people behave the way they do
- Identify how people can be influenced and explore personal influencing skills
- Deal with unsafe behaviour
- Set achievable goals
- Effectively communicate with colleagues
- Understand the avenues within your business for ongoing support



## Benefits

The benefits of behavioural safety training include:

- Discussing workplace safety in a confidential environment
- Encouraging constructive communications and employee engagement
- Increased management visibility
- Learning to act promptly on unsafe acts
- Learning to think about aspects of human factors
- Providing some leading indicators for safety





## Bespoke Training

We can also offer bespoke training following a specific incident. For example, we recently worked with a customer after a serious work at height accident and HSE prosecution. Focusing on supervising and working safely at height, this three-hour course covered:

- Relevant case studies
- Accountability, responsibility and effective supervision
- Use of behavioural safety audits



## Zurich Risk Advisor

When people are experiencing stressful situations they are more prone to behavioural changes, causing them to make errors of judgment, mistakes and rule violations. Our free-to-use app allows you to undertake a basic assessment of your existing arrangements for managing stress and mental health decline at work as well as providing guidance for improvements, and insight on related topics.

[Zurich Risk Advisor](#)



For more details on any of our risk solutions, please speak to your usual Zurich contact or email: [zrs.enquiries@uk.zurich.com](mailto:zrs.enquiries@uk.zurich.com)

This is a general description of services such as risk engineering or risk management services by Zurich Resilience Solutions which is part of the Commercial Insurance business of Zurich Insurance Group, and does not represent or alter or supplement the terms of or coverages provided under any insurance policy or service agreement. Such services are provided to qualified customers subject to the terms of the applicable agreements issued by affiliated companies of Zurich Insurance Company Ltd, including but not limited to Zurich Management Services Limited, The Zurich Centre, 3000b Parkway, Whiteley, Fareham, Hampshire, PO15 7JZ, UK ("ZMS").

The opinions expressed herein are those of Zurich Resilience Solutions as of the date of the release and are subject to change without notice. All information contained in this document has been compiled and obtained from sources believed to be reliable and credible but no representation or warranty, express or implied, is made by Zurich Insurance Company Ltd or any of its affiliated companies (Zurich Insurance Group) as to their accuracy or completeness. This document is not intended to be legal, underwriting, financial, investment or any other type of professional advice. Zurich Insurance Group disclaims any and all liability whatsoever resulting from the use of or reliance upon this document. Nothing express or implied in this document is intended to create legal relations between the reader and any member of Zurich Insurance Group.

This document may not be distributed or reproduced either in whole, or in part, without prior written permission from ZMS. No member of Zurich Insurance Group accepts any liability for any loss arising from the use or distribution of this document. This document does not constitute an offer or an invitation for the sale or purchase of securities in any jurisdiction.

P0193861 (04/22) TCL

