

Risk Management insights for Aegis members

Zurich Resilience Solutions is committed to helping you find solutions to manage risk and run your business effectively.

In this issue:

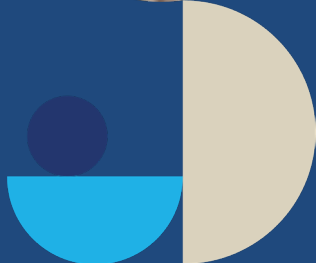
Video: Roadmap ZRS Aegis Members Website

Reminder: MDP 2025-2026

January 2026 Insights

OSHA Requirements:

- Recording
- Reporting
- Recordkeeping



New Resource Alert

A video titled “Roadmap of the Aegis (ZRS) Members Website” is now available to learn how to use this website. (Located directly under the top banner).

To watch the video:

Access [Aegis | Zurich Resilience Solutions](#) Start the video “[Roadmap of the Aegis \(ZRS\)Members Website](#)”.

Have you completed your Member Development Plan (MDP)? Click the following link [Aegis Members Development Plan 2025-2026](#) to access your MDP. [Aegis Management Development Plan 2025-2026](#)

January 2026 Data Insights Analysis: Focuses on Severe Claims within the Aegis Captive.

[Aegis January 2026 Data Insights](#) Please review and share these resources with your employees and management team to help minimize and prevent risk, build a cohesive, high-performing team, and achieve your business goals.

OSHA Requirements to follow.

Recording, Reporting, and Recordkeeping

OSHA Recording, Reporting, and Recordkeeping Requirements

Note: Items 1 and 2 apply to all Aegis Captive Members.

Item 3 applies if your business had **more than 100 employees at any time during 2025.**

Please reach out to Bill Rudersdorf or Ronda Tack with any questions.

1. OSHA 300 Injury Recording Requirements

Employers with more than 10 employees must record work-related fatalities, injuries, and illnesses using OSHA Forms (300, 200A, and 301) or equivalent.

Learn more: Recordkeeping Forms OSHA: [Recordkeeping - Recordkeeping Forms | Occupational Safety and Health Administration](#)

2. OSHA Injury Reporting Requirements

All employers must notify OSHA:

Within 8 hours of a work-related fatality.

Within 24 hours of an in-patient hospitalization, amputation, or loss of an eye

Details: [Report A Fatality or Sever Injury | OSHA: Report a Fatality or Severe Injury | Occupational Safety and Health Administration](#)

3. OSHA 300 Electronic Submission (ITA) Requirements

Establishments meeting size and industry criteria must submit injury and illness data electronically January 2 – March 2 via OSHA's Injury Tracking Application (ITA). Check if this applies to you: [ITA Coverage Application | Occupational Safety and Health Administration](#)

CONTACTS

Bill Rudersdorf

Captive Executive
213-241-7509

William.Rudersdorf@zurichna.com

Ronda Tack

Program Executive, Captives, Programs & Direct Markets
720-202-8933

Ronda.Tack@zurichna.com

We look forward to helping you achieve your Goals this year!

[Aegis | Zurich Resilience Solutions](#)
[Zurich Resilience Solutions](#)

This email was sent by The Zurich Services Corporation, 1299 Zurich Way, Schaumburg, IL 60196
©2026 The Zurich Service Corporation. All Rights Reserved.

This is a general description of services such as risk engineering or risk management services provided by Zurich Resilience Solutions, which is part of the Commercial Insurance business of Zurich Insurance Group and does not represent or alter any service agreement or insurance policy underwritten by individual member companies of Zurich, including Zurich American Insurance Company. In the United States, risk engineering and risk management services are provided by The Zurich Services Corporation. The opinions expressed herein are those of Zurich Resilience Solutions as of the date of the release and are subject to change without notice. We undertake no obligation to publicly update or revise any of this information, whether to reflect new information, future developments, events or circumstances or otherwise. Moreover, Zurich reminds you that this publication cannot be assumed to contain every acceptable safety and compliance procedure or that additional procedures might not be appropriate under the circumstances. The subject matter of this publication is not tied to any specific insurance product nor will adopting these policies and procedures ensure coverage under any insurance policy.

This document has been produced solely for informational purposes. All information contained in this document has been compiled and obtained from sources believed to be reliable and credible but no representation or warranty, express or implied, is made by Zurich Insurance Company Ltd or any of its affiliated companies (Zurich Insurance Group) as to their accuracy or completeness. This document is not intended to be legal, underwriting, financial, investment or any other type of professional advice. Zurich Insurance Group disclaims any and all liability whatsoever resulting from the use of or reliance upon this document. Nothing express or implied in this document is intended to create legal relations between the reader and any member of Zurich Insurance Group. Certain statements in this document are forward-looking statements, including, but not limited to, statements that are predictions of or indicate future events, trends, plans, developments or objectives. Undue reliance should not be placed on such statements because, by their nature, they are subject to known and unknown risks and uncertainties and can be affected by numerous unforeseeable factors. The subject matter of this document is also not tied to any specific service offering or an insurance product nor will it ensure coverage under any insurance policy. No member of Zurich Insurance Group accepts any liability for any loss arising from the use or distribution of this document. This document does not constitute an offer or an invitation for the sale or purchase of securities in any jurisdiction.

Zurich is committed to fair and responsible business practices and prohibits all forms of bribery or corruption and any business conduct that could create the appearance of improper influence. If you have any questions please contact the Zurich U.S. Compliance Office at usz.ComplianceOffice@zurichna.com.