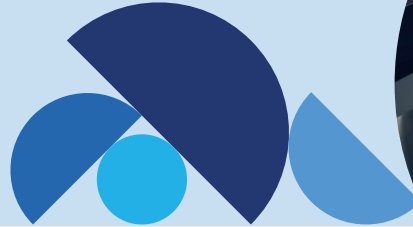


SpearTip's Incident Response Services

SPEARTIP
A company of **ZURICH**

ZURICH
Resilience Solutions



15 MINUTE
RESPONSE TIME

1

24/7/365
BREACH RESPONSE

30 DAY
INCIDENT COMPLETION

2

SpearTip is a trusted provider of breach coaches and carriers for clients across all industries. Our US-based Security Operations Center operates 24/7/365 with certified engineers ready to respond to cyber incidents at a moment's notice. We are capable of responding to events within minutes of engagement, providing assistance during business email compromise and ransomware incidents. Our team works swiftly to conduct thorough investigations and perform digital forensic analysis. We then deliver a comprehensive report and ensure the incident is fully resolved within 30 days, enabling your organization to close claims on time and recover quickly.

Managed Detection and Response Inclusion

In every investigation, our Managed Detection and Response services are included for 30-45 days depending on the incident to ensure any other intrusion attempts are mitigated. Clients can extend these services post incident for continuous threat detection through endpoint and identity monitoring.

Need to file claim?

Zurich's Customer Care Center is available 24/7 to help you report a claim. For claims inquiries, call [800.987.3373](tel:800.987.3373) or [877.962.2567](tel:877.962.2567) or email usz.cyberclaims@zurichna.com.

Experiencing a breach?

Contact SpearTip's 24/7/365 Incident Response hotline by email at breachresponse@spearTip.com or call [833.997.7327](tel:833.997.7327).

1. SpearTip's Service Level Agreement (SLA) in response is within 15 minutes of an escalated breach from a client.

2. SpearTip's Incident Response (IR) team works diligently to close investigations within 30 days, however, third parties may extend this timeline.

Incident Response Guide

Below are general steps to follow to ensure quick response and recovery to a cyber incident.

1. Call SpearTip at **833.997.7327** or email **breachresponse@speartip.com** and our team will conduct preliminary scoping for further analysis.
2. Contact your legal counsel to advise on proper response to the incident.

SpearTip's Incident Response Services



Data Breach Investigation

During an investigation, we analyze data and provide guidance on what to do next. We find retrievable data, exhaust available response methods, and defend against threat actors to get your business back into a fully operational state.



Decryption Assistance

We work on your behalf to gain access to the decryptor to safely recover any assets accessed or manipulated by a threat actor. Once we have the decryptor, our team tests to ensure it is safe. As this is verified, we continue to assist in decryption process as needed.



Digital Forensics

Our digital forensics services start with proper gathering, handling, and cataloging of information that can be used to understand the incident's cause. We help with evidence discovery, forensic analysis, reconstruction, and future cyber maturity guidance.

*During SpearTip investigations, we give our clients **30-45 days of cloud or endpoint monitoring** depending on the incident endured to protect against any additional attempted intrusions.

SpearTip, a Zurich Company
1714 Deer Tracks Trail, St. Louis, MO
800.236.6550 www.speartip.com

For further information, please contact us at info@speartip.com

This is a general description of certain types of managed security services, and/or other risk engineering or risk management services provided by Zurich Resilience Solutions, which is part of the Commercial Insurance business of Zurich Insurance Group and does not represent or alter any insurance policy or service agreement. Such services are provided to qualified customers by affiliates of Zurich Insurance Company Ltd, including but not limited to SpearTip, LLC, 1714 Deer Tracks Trail Suite 150, Saint Louis, MO 63131, USA; and The Zurich Services Corporation and Zurich American Insurance Company, each at 1299 Zurich Way, Schaumburg, IL 60196, USA. The opinions expressed herein are those of SpearTip, LLC as of the date of the release and are subject to change without notice. This document has been produced solely for informational purposes. All information contained in this document has been compiled and obtained from sources believed to be reliable and credible but no representation or warranty, express or implied, is made by Zurich Insurance Company Ltd or any of its affiliated companies (collectively, Zurich Insurance Group) as to their accuracy or completeness. This document is not intended to be legal, underwriting, financial, investment or any other type of professional advice. Zurich Insurance Group disclaims any and all liability whatsoever resulting from the use of or reliance upon this document. Nothing express or implied in this document is intended to create legal relations between the reader and any member of Zurich Insurance Group. Certain statements in this document are forward-looking statements, including, but not limited to, statements that are predictions of or indicate future events, trends, plans, developments or objectives. Undue reliance should not be placed on such statements because, by their nature, they are subject to known and unknown risks and uncertainties and can be affected by numerous unforeseeable factors. The subject matter of this document is also not tied to any specific service offering or an insurance product nor will it ensure coverage under any insurance policy. No member of Zurich Insurance Group accepts any liability for any loss arising from the use or distribution of this document. This document does not constitute an offer or an invitation for the sale or purchase of securities in any jurisdiction. In the United States, managed security services are provided by SpearTip, LLC and risk engineering and risk management services are provided by The Zurich Services Corporation.