



Zurich Risk Engineering Claims Analysis Tool (RECAT) Customer Portal

Zurich Risk Engineering Claims Analysis Tool (RECAT) has been transformed to better serve our customers. ZRS is excited to launch the new “RECAT Customer Portal.”

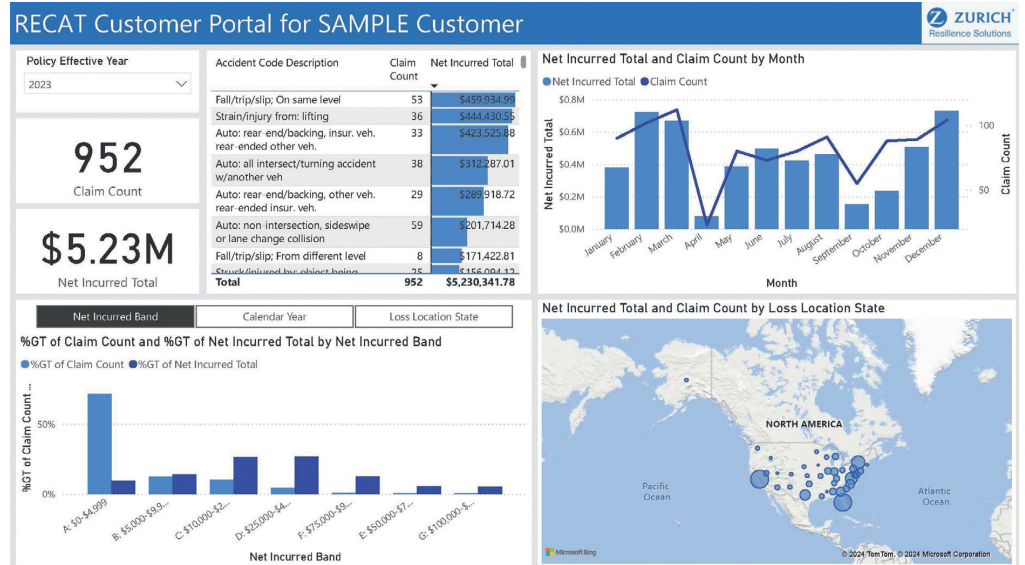
RECAT Customer Portal What's New

Functions & Capabilities

- Enhance customer experience and Power BI versus excel
- Updated export functionality
- Ability to load TPA data
- Numerical and visual data analysis by coverage of all Casualty lines; Auto, Workers' Comp, General Liability
- Data-driven focus on insights and growth
- Anytime access without requesting from account engineer

Customer Benefits

- Customers with TPA data
- Customers unable to use macro enabled excel file
- Easy to use customized dashboard to help you analyze, interpret your company's claim data and identify clear specific loss trends
- Identifies contributing factors associated with claims litigation to establish a cause for action
- Assists in the development of safety strategies to help reduce claims



Coverage of Casualty ALL lines



Auto



General Liability



Workers' Comp

POWER BI Establish a compelling case for risk mitigation action



Estimated Pricing

- Annual unbundled fee which includes a monthly refresh of your data
- Weekly and daily refresh of data available and pricing based upon refresh frequency
- Change Fee TBD based on level of changes requested

For further information, please contact your ZRS Risk Engineering Consultant by:
Email: risk.engineering@zurichna.com
Phone: 800.982.5964

The Zurich Services Corporation

Zurich Resilience Solutions
1299 Zurich Way, Schaumburg, IL 60196-1056
800.982.5964 www.zurichna.com

The information in this publication was compiled from sources believed to be reliable for. This is a general description of services such as risk engineering or risk management services provided by Zurich Resilience Solutions, which is part of the Commercial Insurance business of Zurich Insurance Group and does not represent or alter any insurance policy or service agreement. Such services are provided to qualified customers by affiliates of Zurich Insurance Company Ltd, including but not limited to Zurich American Insurance Company, 1299 Zurich Way, Schaumburg, IL 60196, USA, and The Zurich Services Corporation, 1299 Zurich Way, Schaumburg, IL 60196, USA. The opinions expressed herein are those of Zurich Resilience Solutions as of the date of the release and are subject to change without notice. This document has been produced solely for informational purposes. All information contained in this document has been compiled and obtained from sources believed to be reliable and credible but no representation or warranty, express or implied, is made by Zurich Insurance Company Ltd or any of its affiliated companies (Zurich Insurance Group) as to their accuracy or completeness. This document is not intended to be legal, underwriting, financial, investment or any other type of professional advice. Zurich Insurance Group disclaims any and all liability whatsoever resulting from the use of or reliance upon this document. Nothing express or implied in this document is intended to create legal relations between the reader and any member of Zurich Insurance Group. Certain statements in this document are forward-looking statements, including, but not limited to, statements that are predictions of or indicate future events, trends, plans, developments, or objectives. Undue reliance should not be placed on such statements because, by their nature, they are subject to known and unknown risks and uncertainties and can be affected by numerous unforeseeable factors. The subject matter of this document is also not tied to any specific service offering or an insurance product nor will it ensure coverage under any insurance policy. No member of Zurich Insurance Group accepts any liability for any loss arising from the use or distribution of this document. This document does not constitute an offer or an invitation for the sale or purchase of securities in any jurisdiction. Risk Engineering services are provided by The Zurich Services Corporation.

©2024 The Zurich Services Corporation. All Rights Reserved.

A1-P0771142-A (05/24) P0771142

