

# Risk Services for Food and Beverage Manufacturers



## Solutions to reduce food safety risks

Organizations trust Zurich Resilience Solutions' (ZRS) to keep them current with the latest risk intelligence to move effectively manage their evolving business and risk management needs. By collaborating with our risk specialists, your business can gain the knowledge and insights needed to manage your risk.

ZRS provides an effective approach to risk management to help you protect your operations against risk rather than simply insuring against it.

## Mitigate risk to protect productivity, relationships and profits

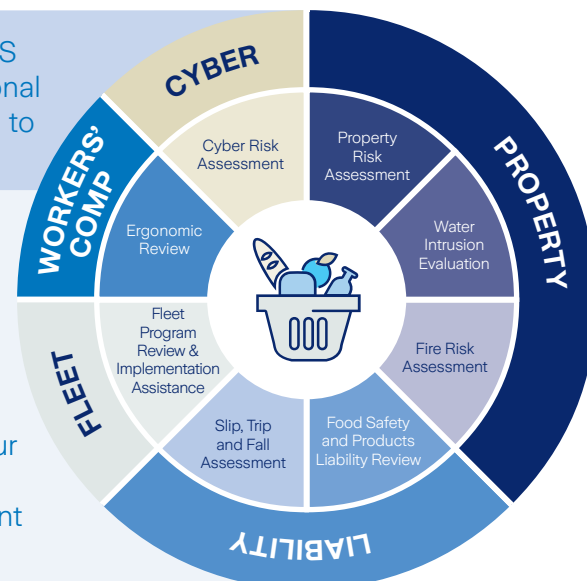
Food and beverage manufacturers are essential to daily life and the products they make are consumed by people around the world. Your company, as part of this supply chain, has an immense **responsibility** to deliver quality, safety and value. This responsibility can carry significant financial and reputational risks if something goes wrong.

Food and beverage manufacturers need to **identify, assess and mitigate those risks** as part of their risk management program. ZRS can help. Our Risk Engineers understand your challenges based on our predictive analytics powered by tools that include AI, cognitive computing and smart algorithms.

ZRS has experience working with business leaders in manufacturing, so we understand effective practices to reduce your risks. The focus of our team is on identifying, assessing and helping you address operational risks. Our solutions were built with your risks in mind based on our experience and in-depth analysis of industry claims and trends.

Contact the ZRS team for additional information and to get started.

Understand your organization's risk management needs.





There were **491 food product recalls** in the U.S. during 2024.<sup>1</sup>



Work-related motor vehicle accidents **cost U.S. employers more than \$72B** in 2022.<sup>4</sup>



Nearly **36.7K annual fires** at industrial and manufacturing properties cause an estimated **1.5B in property damage**.<sup>2</sup>



**9.84B connected industrial devices** (Internet of Things) projected in manufacturing environments by 2028.<sup>5</sup>



Food and beverage manufacturing had **61.4K total injury and illness** cases in 2023.<sup>3</sup>

## ZRS Services for Food and Beverage Manufacturers

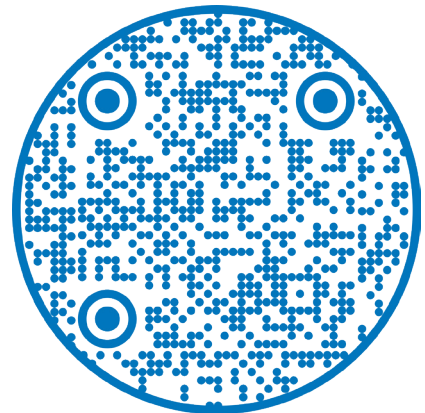
ZRS Risk Engineers can help guide you to the best services to address the most frequent and severe risks facing your business.

- **Property Risk Assessment:** Identify and assess hazards, exposures and controls relevant to your property, including hard-to-replace equipment.
- **Water Intrusion Evaluation:** Assess various facility features, exposures and controls relative to water intrusion and water damage risks that commonly affect the manufacturing process.
- **Fleet Program Review and Implementation Assistance:** Evaluate your fleet program and gain feedback aligned with ANSI standards.
- **Fire Risk Assessment:** Understand fire inception hazards and how to reduce risk with loss scenarios and quantification of potential events.

- **Food Safety and Products Liability Review:** The cost of food recalls can be substantial and may undermine the confidence of your customers.
- **Cyber Risk Assessment:** Proactively protect your organization against cyber threats with an analysis of weak points in your business system and help remediating them to optimize your security posture.
- **Slip, Trip and Fall Assessment:** Understand related exposures to reduce slips, trips and falls with an assessment using our 10-point factor rating system.
- **Ergonomic Review:** Strains are the leading category of workers' compensation claims for manufacturing, which impact operations.

### Sources

1. Combined USDA/FSIS, FDA and Food Industry Counsel, LLC published statistics, current as of April 2025.
2. McGree, Tucker. *National Fire Prevention Agency*. "Fire in Industrial or Manufacturing Properties". 31 August, 2023
3. U.S. Department of Labor's Bureau of Labor Statistics. *Employer-reported Workplace Injuries and Illnesses - 2023*. 8 November, 2024
4. Network of Employers for Traffic Safety (NETS)
5. Statista. *Number of Industrial IoT connections*. Statista Market Insights. Updated March 2024.



### Contact us:

800-982-5964

[risk.engineering@zurichna.com](mailto:risk.engineering@zurichna.com)

[us.zurichresilience.com](https://us.zurichresilience.com)

## Zurich Resilience Solutions

1299 Zurich Way,  
Schaumburg, IL 60196-1056

This is a general description of services such as risk engineering or risk management services provided by Zurich Resilience Solutions, which is part of the Commercial Insurance business of Zurich Insurance Group and does not represent or alter any insurance policy or service agreement. Such services are provided to qualified customers by affiliates of Zurich Insurance Company Ltd, including but not limited to Zurich American Insurance Company, 1299 Zurich Way, Schaumburg, IL 60196, USA, and The Zurich Services Corporation, 1299 Zurich Way, Schaumburg, IL 60196, USA. The opinions expressed herein are those of Zurich Resilience Solutions as of the date of the release and are subject to change without notice. This document has been produced solely for informational purposes. All information contained in this document has been compiled and obtained from sources believed to be reliable and credible but no representation or warranty, express or implied, is made by Zurich Insurance Company Ltd or any of its affiliated companies (Zurich Insurance Group) as to their accuracy or completeness. This document is not intended to be legal, underwriting, financial, investment or any other type of professional advice. Zurich Insurance Group disclaims any and all liability whatsoever resulting from the use of or reliance upon this document. Nothing express or implied in this document is intended to create legal relations between the reader and any member of Zurich Insurance Group. Certain statements in this document are forward-looking statements, including, but not limited to, statements that are predictions of or indicate future events, trends, plans, developments or objectives. Undue reliance should not be placed on such statements because, by their nature, they are subject to known and unknown risks and uncertainties and can be affected by numerous unforeseeable factors. The subject matter of this document is also not tied to any specific service offering or an insurance product nor will it ensure coverage under any insurance policy. No member of Zurich Insurance Group accepts any liability for any loss arising from the use or distribution of this document. This document does not constitute an offer or an invitation for the sale or purchase of securities in any jurisdiction. In the United States, risk engineering and risk management services are provided by The Zurich Services Corporation.

©2025 The Zurich Services Corporation. All rights reserved.

A1-P0989040-A (04/25) P0989040

