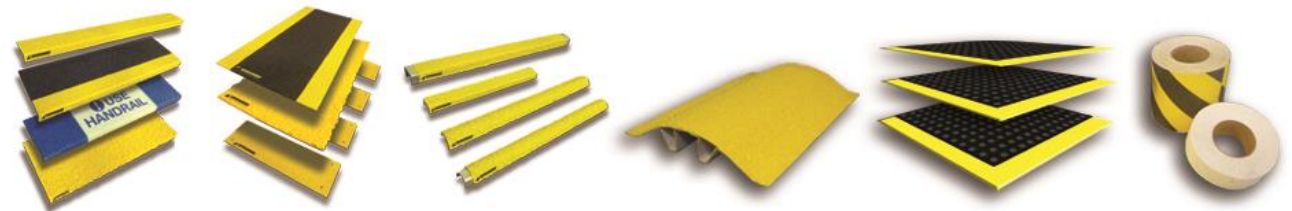


Welcome to Safeguard Technology

Leading Manufacturer of Anti-Slip Safety Products



- Manufacturing the highest quality Anti-Slip Covers since 1992
- For installation over existing steps, walkways, and ladder rungs
- Corrosion and impact resistant
- Environments from offshore drilling platforms to residential decks

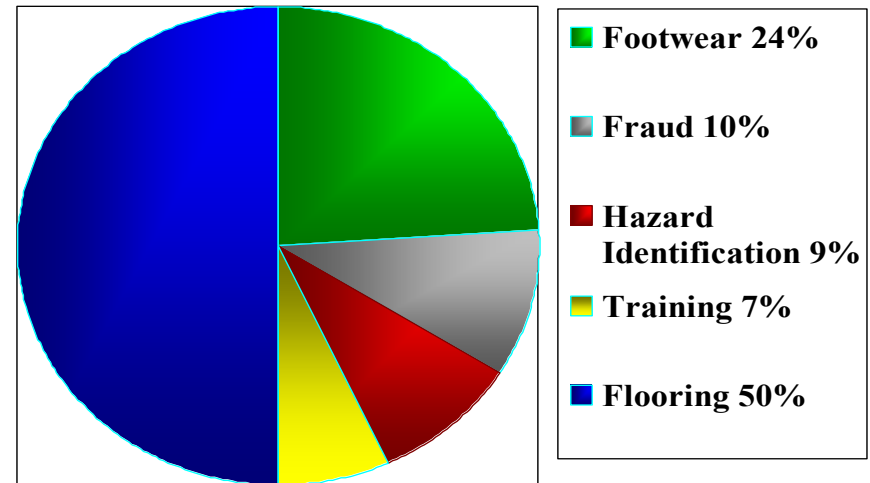


Relevant Statistics

- Slips and falls cause one in six accidents
- Second-leading cause of death in workplace
- 22% of slip/fall accidents result in more than 31 days away from work
- 85% of Worker's Compensation claims due to employees slipping on slick floors

Cost to Business

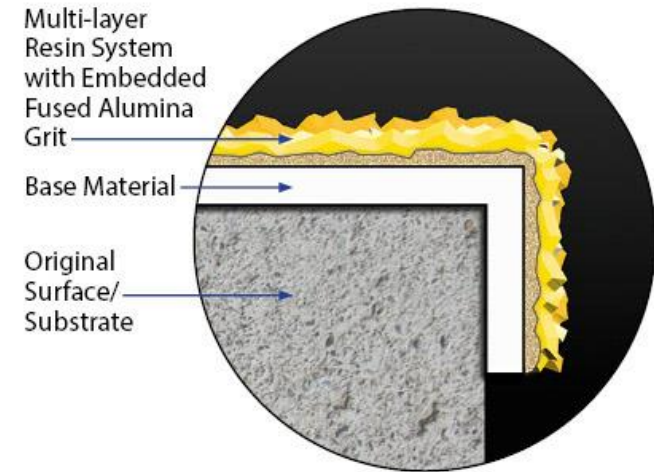
- Compensation & medical costs from employee slip/fall accidents ~\$70 billion/year
- Insurance costs
- Regulatory action/fines
- Legal liability



Causes of Slips & Falls

The Anti-Slip Surface

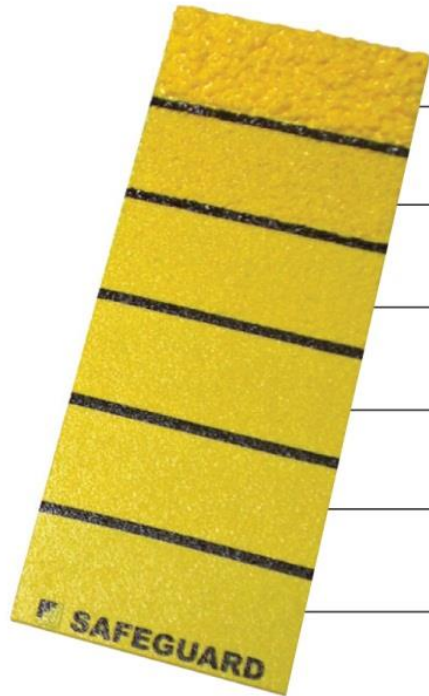
- Not a spray or paint for application in the field
- Non-load bearing covers for retrofit installation
- Manufactured to specifications in controlled environment
- Engineered surface features Fused Alumina
 - abrasive characterized by sharp-edged particle
 - measures 9.4 on the Mohs Hardness Scale
- Bonded to a variety of base materials



Mohs Hardness Scale	
Diamond	10.0
Fused Alumina Used in Safeguard Products	9.4
Quartz/Silica Sand Most Anti-Slip Products Including Tapes	6-7



Six grades or sizes of Fused Alumina aggregate to address a variety of environments



Super Coarse - Xtreme™

Extra Coarse - Offshore/Heavy Duty

Coarse – Industrial

Fine – Commercial, Pedestrian

Extra Fine – Residential

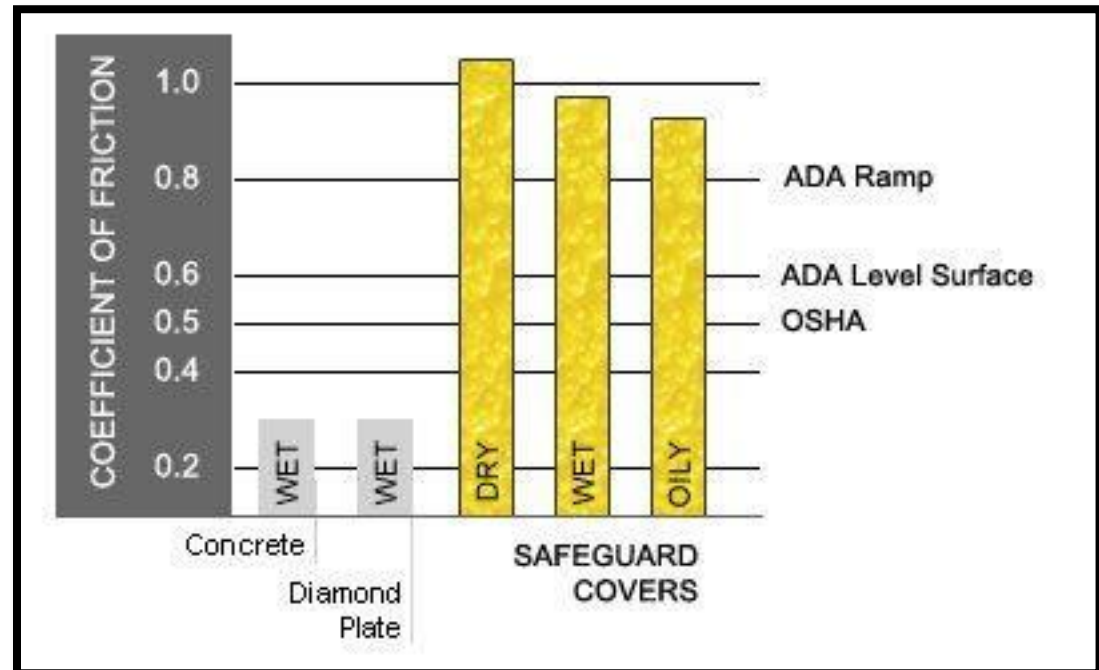
Super Fine – Barefoot

AVERAGE SIZE OF GRIT (AGGREGATE)			
Grades	Mesh	Inches	Microns
Super Coarse (Xtreme)	4/8	0.2	5000
Extra Coarse (Offshore/Heavy Duty)	10	0.085	2125
Coarse (Industrial)	20	0.033	850
Fine (Commercial)	24	0.027	700
Extra Fine (Residential)	36	0.019	485
Super Fine (Barefoot)	54	0.012	305



Reliable Measurement of Traction

- Independent labs verify coefficient of friction tests for anti-slip effectiveness
- Tested while wet, oily, and at an incline
- Brungraber and English devices are certified to ASTM standard
- Safeguard's surface far exceeds OSHA and ADA recommendations



Base Materials

- 1/8" Pultruded Fiberglass (FRP)
- 18 g Stainless Steel
- 18 g G90 Galvanized Steel

Sizes

Standard 90° FRP Covers

- Up to 10' in length (A) and 15" deep (B)
- Standard 1" lip (C)
 - (1.5" and 2" available)

Bull Nose Covers

- Up to 10' in length & 9" deep
- 1" lip

Steel Covers

- Call for maximum capabilities



Base Materials

- 1/8" Pultruded Fiberglass (FRP)
- 1 mm Molded Fiberglass (FRP)
- 18 g Stainless Steel
- 18 g G90 Galvanized Steel
- Vinyl (Flexible PVC)
- Roll-Traction®

Sizes: Width (A) by Length (B)

- FRP - max. 4' x 8'
- Steel - max. 4' x 4'
- Vinyl - max. 4' x 4'
- Roll-Traction® - max. 58" wide



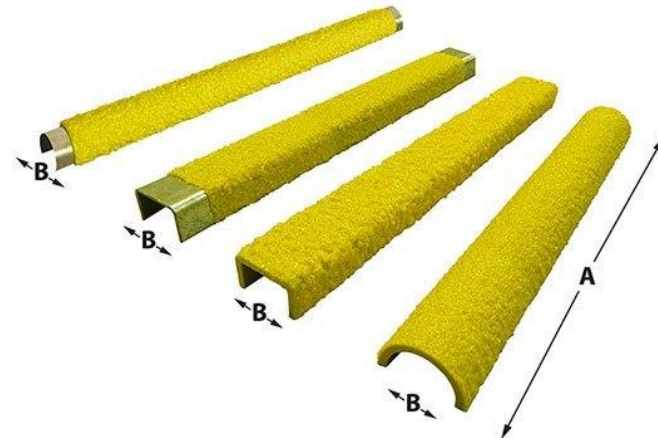
Heel-toe
pattern
with logo

Base Materials

- 1/8" Pultruded Fiberglass (FRP)
- 18 g Stainless Steel
- 18 g G90 Galvanized Steel

Sizes: Length (A) by Diameter (B)

- All materials – length to 48"
- FRP (all shapes) 3/4" to 2" diameter
- Steel (channel) 3/4" to 2" diameter
- Steel (round) 3/4", 7/8", and 1" diameter

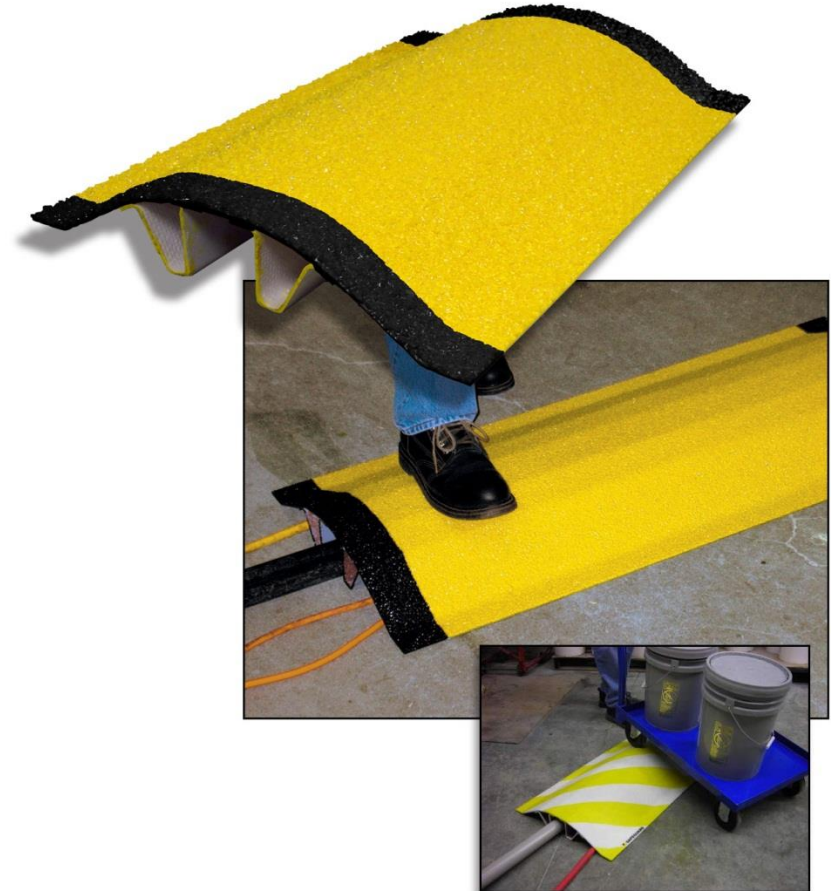


Base Material

- 1/8" Pultruded Fiberglass (FRP)

Sizes: Length (A) by Diameter (B)

- All 20" width
- Standard 24", 36", 48", and 60" lengths
- Custom lengths to maximum 10'
- The channel spans 3" high and wide



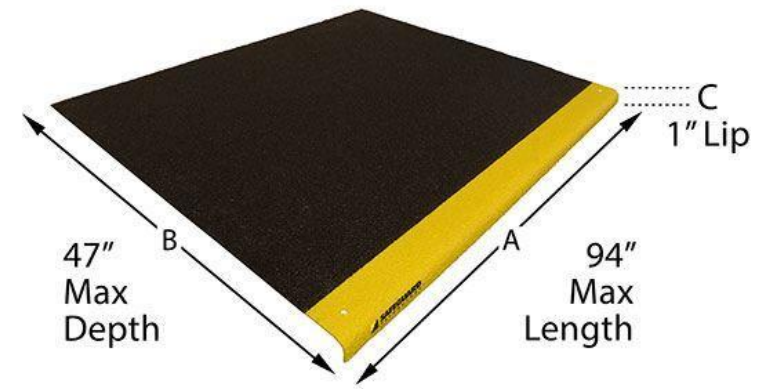
Walkway Treatment with Leading Edge Vertical Coverage

Base Material

- 1/8" Pultruded Fiberglass (FRP)
- 18 g Stainless Steel
- 18 g G90 Galvanized Steel

Sizes: Length (A) by Depth (B) with 1" lip

- 94" max. length
- 47" max. width



Base Material

- High Strength Geomembrane

Base Thickness

- 0.068 inches (1.72 mm)

Sizes: Width (A) by Length (B)

- 29" (A) x 40' (B)
- 40" (A) x 30' (B)
- 58" (A) x 20' (B)
- Custom widths



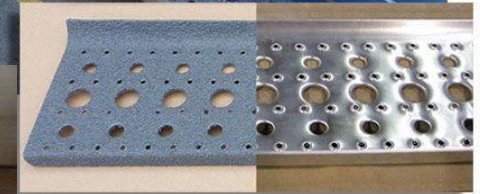
Safeguard Surface Applied to OEM Parts

Option 1

- Customer supplied material

Option 2

- Safeguard supplied material
- Made to customer's technical diagrams

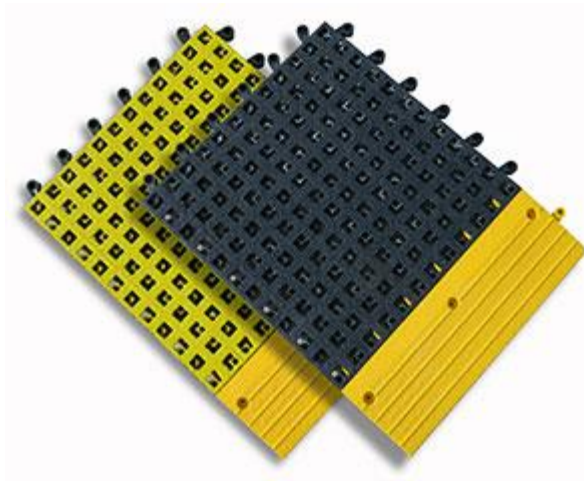


Mat-Traction™ Industrial Anti-Slip Mats

- Industrial or commercial
- Portable
- Cleanable
- Interlocking for configuration



Ergo-
Cushion



Interlocking
Tiles



- Reseller of Safety Track®
- Rolls or treads
- Low traffic areas
- Recommend covers as more permanent solution



Low Cost, No-Frills Step Cover Option

Base Material

- Pultruded Fiberglass (FRP)

Construction

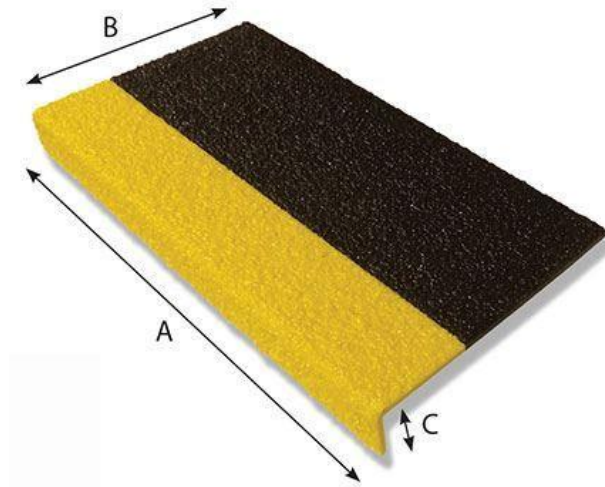
- Standard 90°, 1" lip (C)
- Heavy Duty or Coarse grades
- Solid yellow or yellow/black

Sizes

- 3", 6", and 9" depths (B)
- 24", 30", 36", 48", 60" and 120" lengths (A)

One Year Warranty

One Week Lead Time



Standard Colors:



Premium Colors:

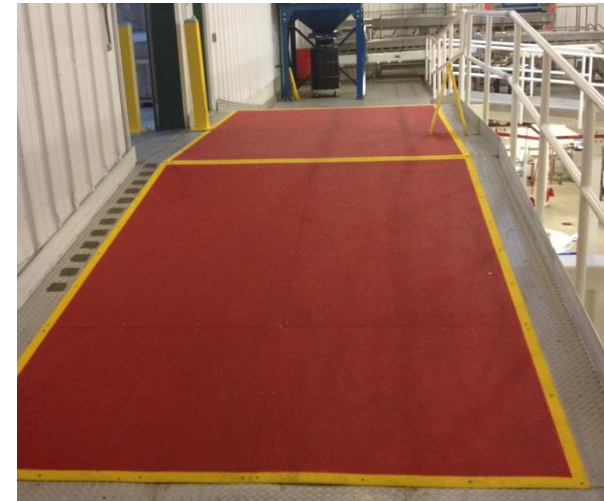


* Custom color matching available upon request, please ask for details.




Two-Tone Color Configuration

- Calls attention to leading edge of step
- Designates change in surface texture
- Signifies a safe walk zone



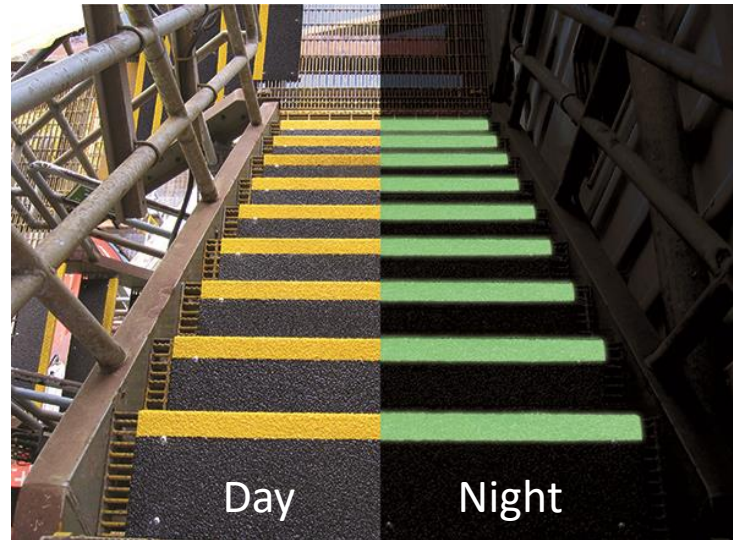
 Hi-Traction®
Step Covers



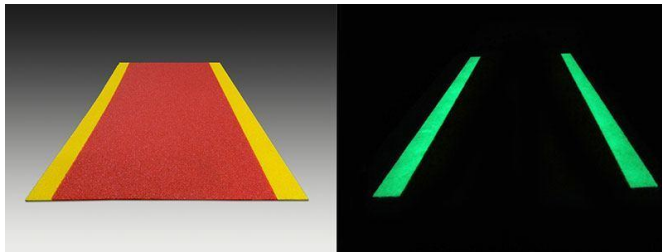
 HiGlo-Traction®
Ladder Rung Covers

 Hi-Traction®
Walkway Covers

- HiGlo-Traction® glows in the dark
- Shows egress path at night or in case of power outage
- Embedded photoluminescent pigment will not wear off



HiGlo-Traction®
Walkway Covers



HiGlo-Traction®
Step Covers



Descriptive Markings

- Safety messages
- Designate PPE areas
- Directional guidance
- Can be visible in power outage

Logos

- Reinforce company brand
- Color match available

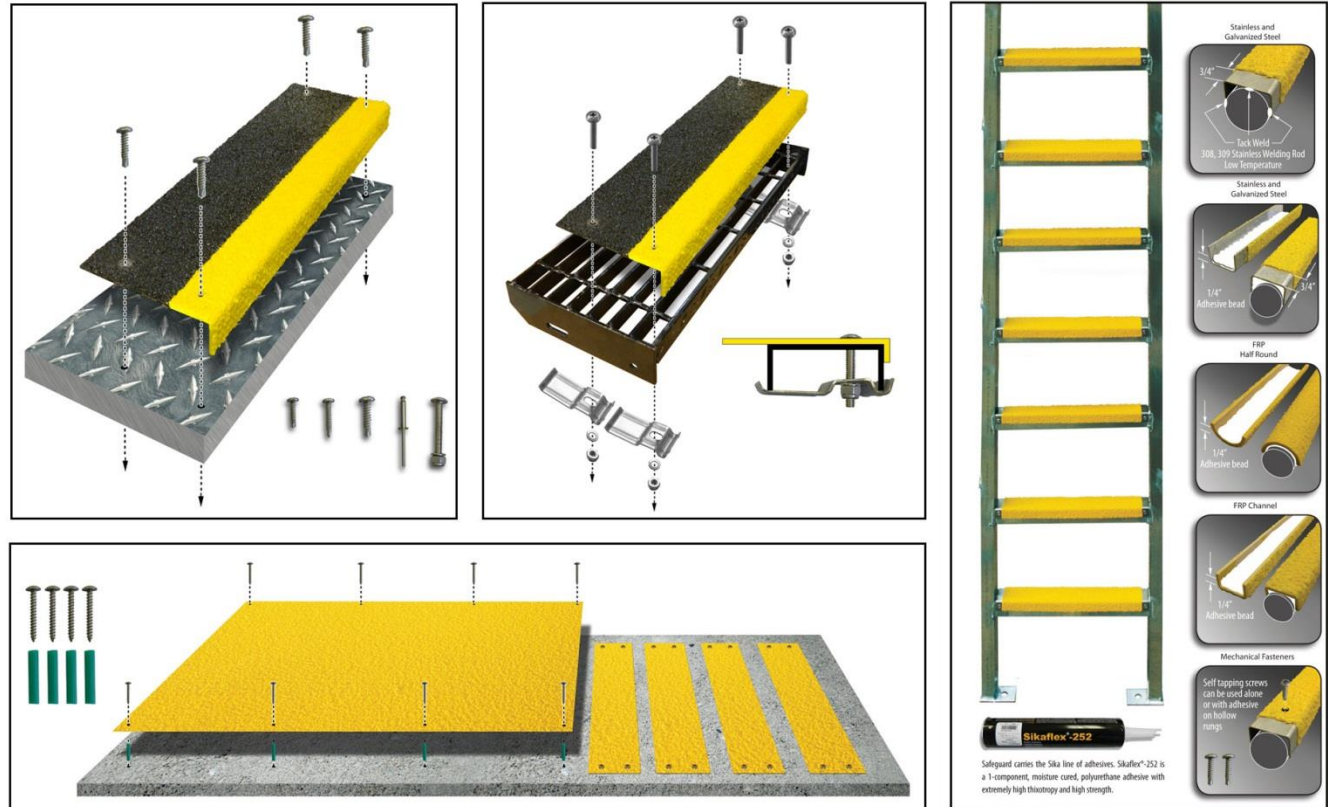


Embedded in cover to last for life of product



Installation

- Little down time needed
- Detailed instructions for each substrate
- Fasteners or adhesive available



Ordering

- Measure area to be covered
- Leave space on sides for irregularities
- Choose base material
 - Size, shape, and condition of substrate
 - Preferred installation method
- Determine proper grit size
 - Location
 - Type of footwear worn
 - Substances present in area
- Choose color(s) and markings
- Fasteners/adhesive

Cleaning

- Keep free of debris
- Detergent or mild degreaser
- Stiff bristle brush
- Power wash
- Do not mop
- No harsh solvents



TOP 10 QUESTIONS TO ASK ABOUT ANTI-SLIP

- 1** Is your supplier a one-stop shop for all critical areas (ladder rungs, steps, walkways)?
- 2** Can you choose from a variety of base material options to accommodate any condition (steel, FRP, vinyl, geomembrane)?
- 3** Do you have options when it comes to grit size?
- 4** Can you maximize the impact of your safety upgrade with a variety of colors (even glow-in-the dark), messaging, and logos?
- 5** Do parts arrive made-to-size with pre-drilled holes and accessories – no need for additional fabrication?
- 6** Will your packages arrive clearly marked for their installation area?
- 7** Does the manufacturer stand behind their product?
- 8** Can the supplier apply top-performing anti-slip surface to your OEM parts?
- 9** Are the products made in the USA?
- 10** Will you get a long-lasting solution that saves money in the long run?

*With Safeguard,
the answer is*



Oil & Gas



DIAMOND
OFFSHORE

Marine

TIDEWATER



Schlumberger

Automotive

Transportation

Bluebird

BUS and COACH - COACHES LTD.

BRB

Delta


BOEING
Forever New Frontiers



Food Processing



Nestlé



Kellogg's



THANK YOU

www.safeguard-technology.com

330-995-5200

info@safeguard-technology.com

